

## Helpman LA-55/a

### Specifications

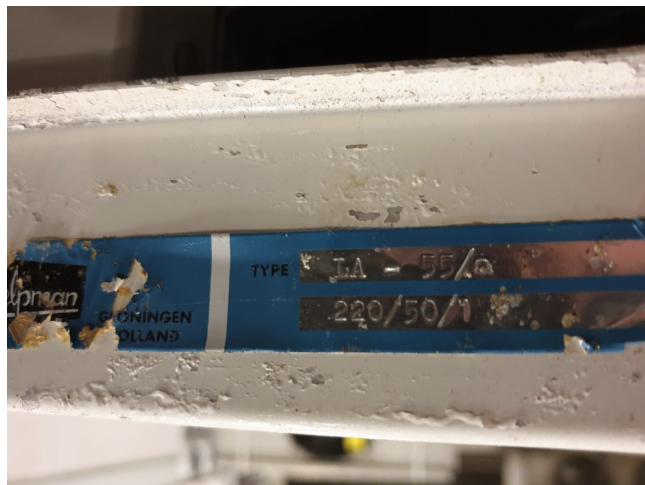
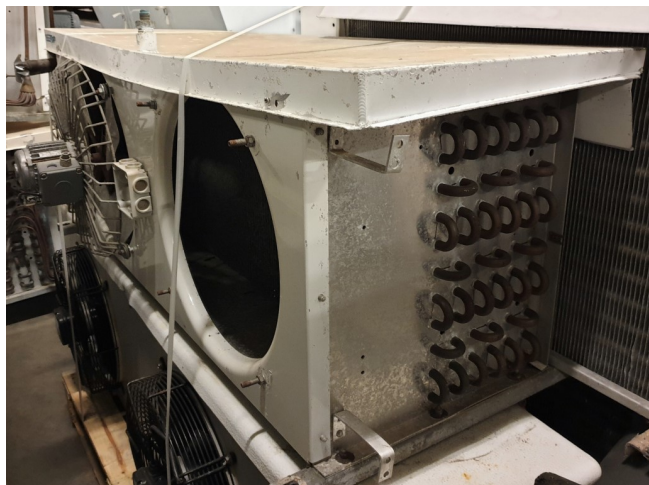
Brand	Helpman
Type	LA-55/a
kW	8,3
Refrigerant	Freon
Number of Fans	2
Fin Space in mm	8
Defrosting	None
m <sup>3</sup> /h	5600
Sizes	1360x600x530 mm
Volume	10,0 dm <sup>3</sup>
Weight	62 kg
Stock	1



### Description

#### Used Helpman LA-55/a

Used Goedhart LA-55/a with a fin space of 8,5 mm. One fan is missing, diameter Ø = 400 mm \*\*All components of this used evaporator will be tested on good working, leak free condition (electro engines), coils, bearings) Choosing HOSBV means buying with warranty. We perform a industrial cleaning and rust spots will be covered. Also, we can arrange your shipment.





LUFTKÜHLER  
UNIT COOLERS

LA-LV

D30-2  
8-76

Type	$t_a = 7,5^{\circ}\text{C}$ $\Delta t = 10^{\circ}\text{C}$	Nennleistung nominal capacity	Luftmenge Air volume	Ventilatoren Fans				Elektr. Abtauung Electric defrost				E		
				Anzahl Number	Flügel durchmesser Fan diameter	Motorleistung Motor power nominal, see D30-20	Motorleistung Motor power nominal, see D30-20	Block Coil	Tropfwanne Drip tray	Stromart Current	Gewicht Weight	Inhalt Internal volume		
kcal/h	m <sup>3</sup> /h	mm	W	W	Anzahl der Heizelemente Gesamtleistung kW	Anzahl der Heizelemente Gesamtleistung kW	Stromart Current	Gewicht Weight	Inhalt Internal volume					
LAMELLENABSTAND 8.5mm											FINSPACING			
LA-9	1180	1000	1	254	70	90	1	0,72	1	0,72	16	1,7		
LA-14	1770	1500	1	305	70	90	1	0,85	1	0,85	220/1	20	2,4	
LA-17	2220	1750	1	305	70	90	2	1,7	1	0,85		24	3,6	
LA-28	3540	2800	1	406	70	90	2	2,14	1	1,07	33	5,4		
LA-37	4750	3700	1	457	70	90	5	4,75	1	0,95	220/1	44	7,1	
LA-48	6150	4900	1	508	220	250	5	5	1	1	220/3	58	9,2	
LA-55	7100	5600	2	406	70	90	2	3,8	1	1,3	380/3	62	10,0	
LA-74	9500	7400	2	457	70	90	5	8,5	1	1,7	83	13,3		
LA-97	12500	9800	2	508	220	250	5	10	1	2	105	17,4		
LA-145	18600	14700	3	508	220	250	5	13	1	2,6	150	25,6		
LA-193	24800	19600	4	508	220	250	7	15,4	2	4,4	202	33,0		
LAMELLENABSTAND 4 mm											FINSPACING			
LV-10	1230	1000	1	254	70	90	1	0,72	1	0,72	15	1,3		
LV-14	1850	1500	1	305	70	90	1	0,85	1	0,85	220/1	20	1,8	